



STEPMASTER® ALUMINIUM NOSING

HEAVY DUTY ALUMINIUM STAIR NOSING FOR HIGH TRAFFIC AREAS

CODE: 430

Our full range of commercial stair nosing's are suitable for internal and external applications. We can supply surface mount or recessed nosing's to suit high traffic commercial areas. Our aluminium stair nosing range provides a mix of quality, performance, compliance and affordability.

Stepmaster® Aluminium nosing are...

SAFE

- Slip Rated between R11 and R13
- Designs that are
- Compliant with AS1428.1-2009
- Low profile allows easy access for all ages

A PERFORMER

- Heavy duty aluminium structure that is designed to last in extreme conditions.
- Can be used indoor or outdoor when installed correctly
- Prevents slips, trips and promotes stair safety
- Large range to suit all requirements

A GOOD LOOKER

- Streamline design helps keep safety fashionable
- Variety of colours available to match or comply with your existing surfaces



EDUCATION



RETAIL



APARTMENTS



TRANSPORT



PUBLIC PLACES



HEALTHCARE



COMMERCIAL



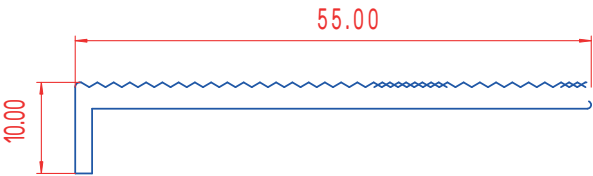
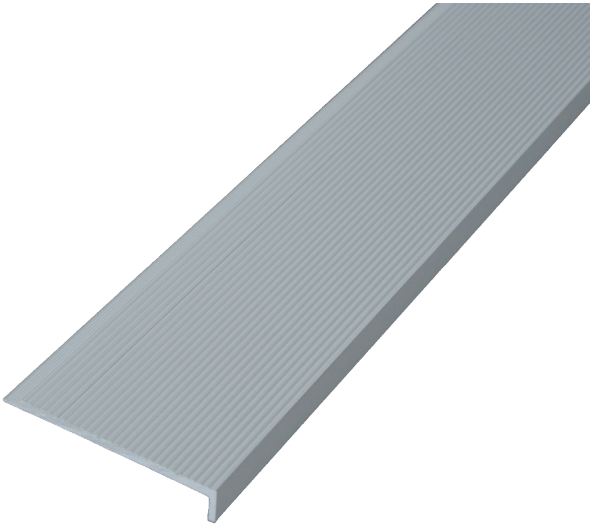
HOSPITALITY

STEPMASTER® NOSING ST1

TECHNICAL DATA

CODE: 430ST1

Base Material	Alloy: 6060, Temper: T5
Finish	Clear Anodised
Tread Width	55mm
Front Depth	10mm
Tread Thickness	2.8mm
Slip Rating	R11
Code Compliance	AS1428.1-2009
Application	Surface mounted on hard floor
Options	Available in black anodised aluminium (ST1B)

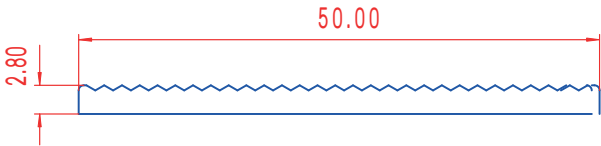


STEPMASTER® NOSING ST2

TECHNICAL DATA

CODE: 430ST2

Base Material	Alloy: 6060, Temper: T5
Finish	Clear Anodised
Tread Width	50mm
Tread Thickness	2.8mm
Slip Rating	R11
Code Compliance	AS1428.1-2009
Application	Surface mounted or rebated on hard floor finishes
Options	Available in black anodised aluminium (ST2B)



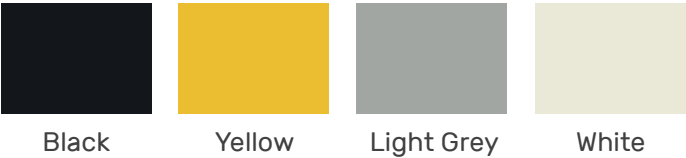
STEPMASTER® NOSING ST3

TECHNICAL DATA

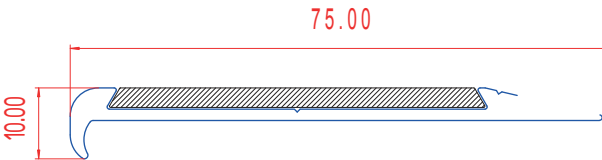
CODE: 430ST3

Base Material	Alloy: 6060, Temper: T5
Finish	Clear Anodised
Tread Width	75mm
Front Depth	10mm
Tread Thickness	4.8mm
Insert Type	Solid Silicon Carbide - Heavy duty, external grade
Insert Width	50mm
Insert Colours	Black, yellow, light grey, white
Insert Slip Rating	R13
Code Compliance	AS1428.1-2009
Features	Predrilled and countersunk for concealed screw fixings - once installed, insert cover all fixings
Application	Surface mounted on hard floor finishes
Options	Available in black anodised aluminium (ST3B)

Standard Colours



Other colours available on request



STEPMASTER® NOSING ST4

TECHNICAL DATA

CODE: 430ST4

Base Material	Alloy: 6060, Temper: T5
Finish	Clear Anodised
Tread Width	72mm
Front Depth	10mm, 30mm
Tread Thickness	2.7mm
Insert Type	Silicon Carbide PVC backed tape
Insert Width	50mm
Insert Colours	Black, yellow, dark grey
Insert Slip Rating	P5
Code Compliance	AS1428.1-2009
Application	Surface mounted on hard floor finishes
Options	Available in black anodised aluminium (ST6B)

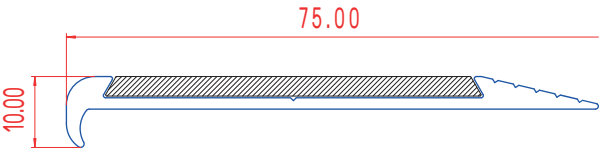
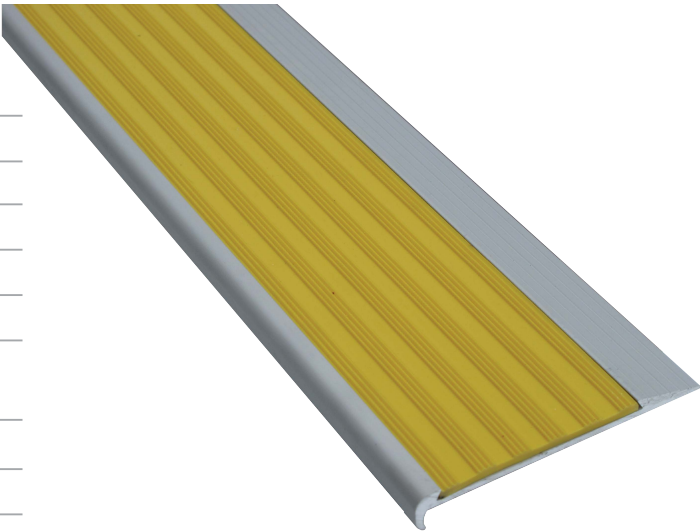
Standard Colours

Black

Yellow

Dark Grey

Other colours available on request



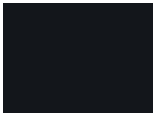
STEPMASTER® NOSING ST5

TECHNICAL DATA

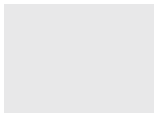
CODE: 430ST5

Base Material	Alloy: 6060, Temper: T5
Finish	Clear Anodised
Tread Width	75mm
Front Depth	10mm
Tread Thickness	4.8mm
Insert Type	Corrugated anodised aluminum
Insert Width	50mm
Insert Colours	Black anodised, clear anodised
Insert Slip Rating	R11
Code Compliance	AS1428.1-2009
Features	Predrilled and countersunk for concealed screw fixings - once installed, insert cover all fixings
Application	Surface mounted on hard floor finishes
Options	Available in black anodised aluminium (ST5B)

Standard Colours

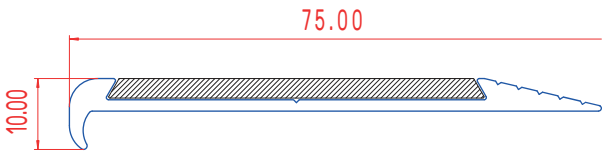
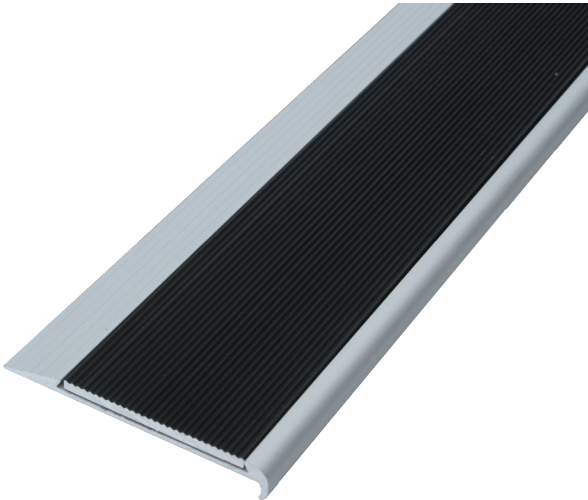


Black anodised



Clear anodised

Other colours available on request



STEPMASTER® NOSING ST6

TECHNICAL DATA

CODE: 430ST6

Base Material	Alloy: 6060, Temper: T5
Finish	Clear Anodised
Tread Width	72mm
Front Depth	10mm, 30mm
Tread Thickness	2.7mm
Insert Type	Silicon Carbide PVC backed tape
Insert Width	50mm
Insert Colours	Black, yellow, dark grey
Insert Slip Rating	P5
Code Compliance	AS1428.1-2009
Application	Surface mounted on hard floor finishes
Options	Available in black anodised aluminium (ST6B)

Black

Yellow

Dark Grey

Other colours available on request

